



ENVIRONMENTAL PERFORMANCE EVALUATION

ISO 14031:1999 and the future

Marcio Viegas

Madrid, 14 September 2005



For the benefit of business and people

The definition of Environmental performance since 1996

- ▶ “measurable results of the environmental management system, related to an organization’s control of its environmental aspects, based on its environmental policy, objectives and targets”

ISO 14001:1996

- ▶ “results of an organization's management of its environmental aspects”

ISO 14031:1999

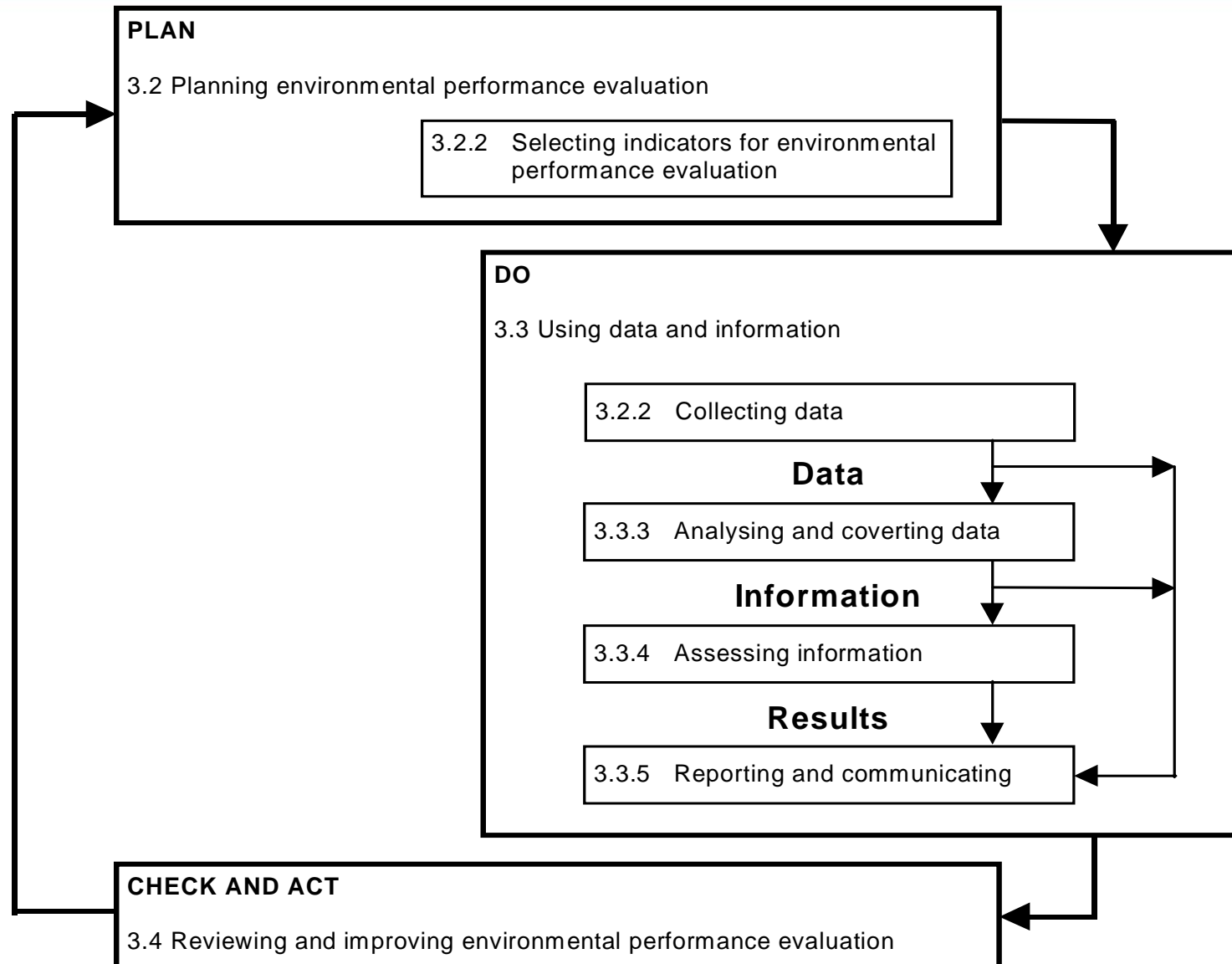
- ▶ “measurable results of an organization's management of its environmental aspects”

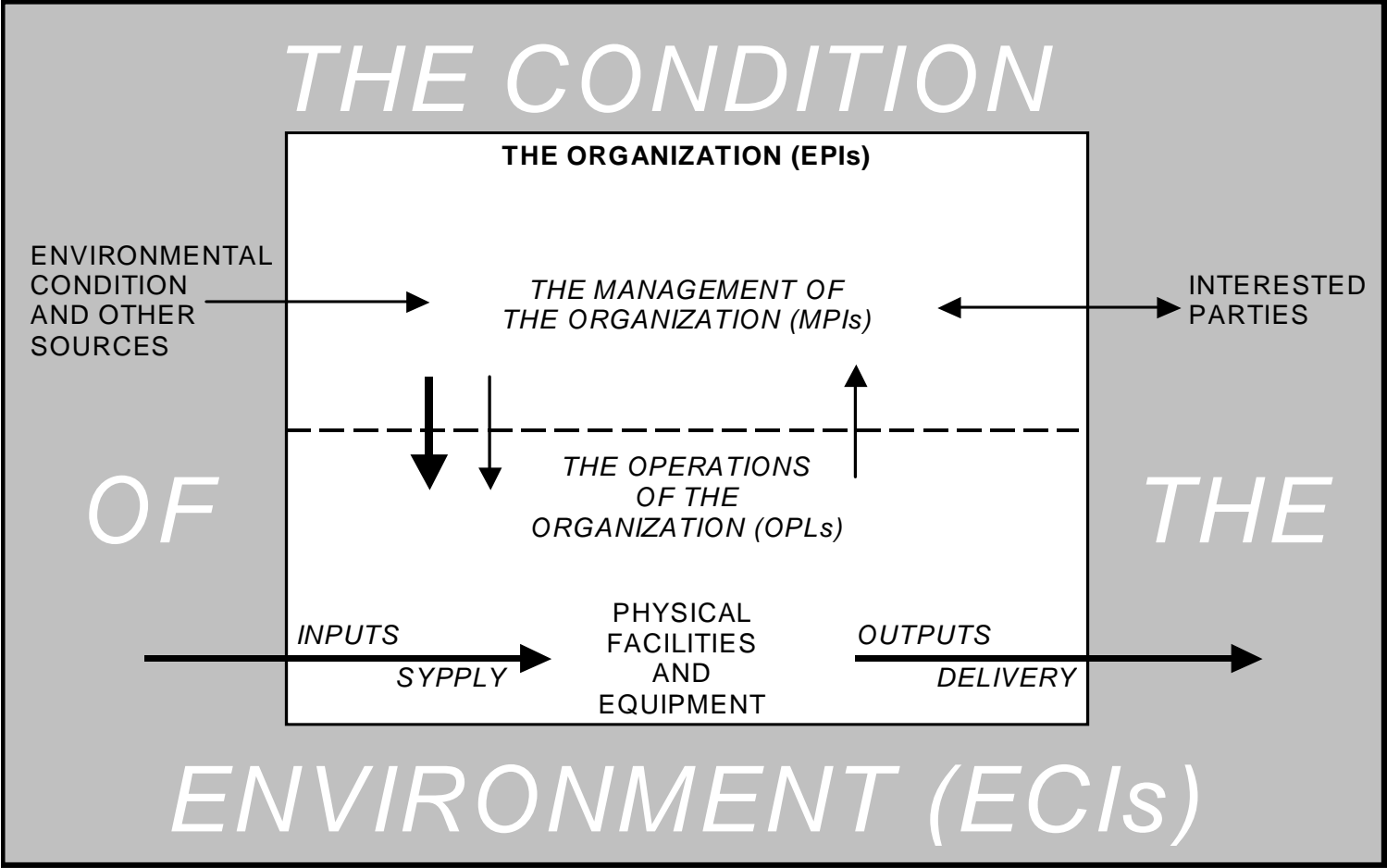
ISO 14001:2004

Environmental performance evaluation (EPE)




- ▶ an internal management process and tool designed to provide management with reliable and verifiable information on an ongoing basis to determine whether an organization's environmental performance is meeting the criteria set by the management of the organization.

ISO 14031:1999





Key

- Information flows: 
- input and output flows related to the organization's operations: 
- Decision flows: 



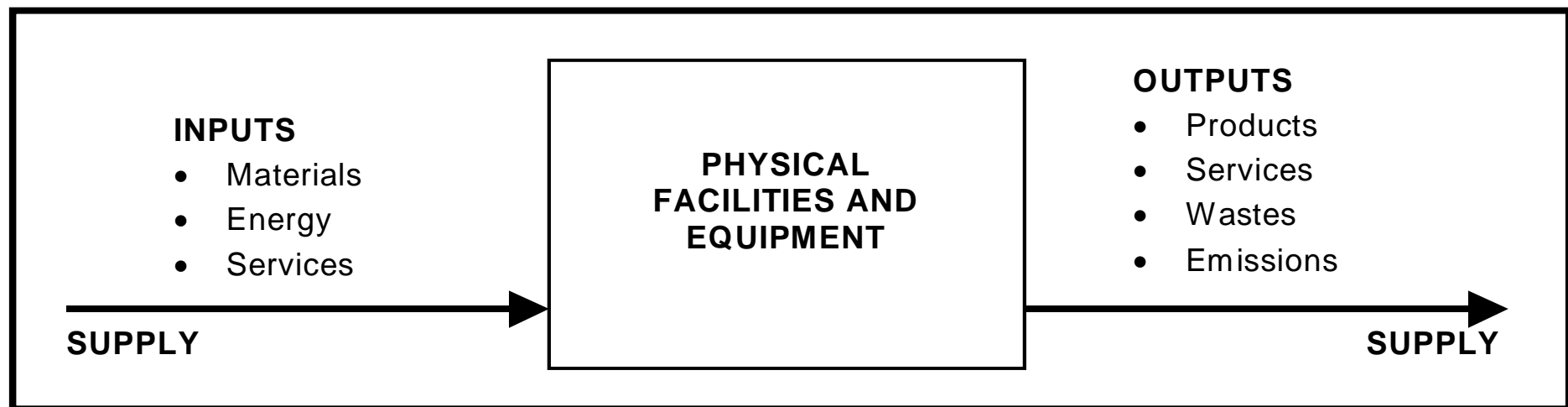
- ▶ **The information generated by EPE can assist an organization to:**
 - determine any necessary actions to achieve its environmental performance criteria;
 - identify significant environmental aspects;
 - identify opportunities for better management of its environmental aspects;
 - identify trends in its environmental performance;
 - increase the organization's efficiency and effectiveness;
 - identify strategic opportunities.
- ▶ **Reporting and communication**

- ▶ **Direct measures or calculations: basic data or information**
 - tonnes of contaminant emitted.
- ▶ **Relative measures or calculations: data or information compared to or in relation to another parameter (production level, time, location or background condition)**
 - tonnes of contaminant emitted per tonnes of product manufactured
 - tonnes of contaminant emitted per unit of sales turnover.
- ▶ **Indexed: describing data or information converted to units or to a form which relates the information to a chosen standard or baseline**
 - contaminant emissions in the current year expressed as a percentage of those emissions in a baseline year.
- ▶ **Aggregated: describing data or information of the same type, but from different sources, collected and expressed as a combined value**
 - total tonnes of a given contaminant emitted from production of a product in a given year, determined by summing emissions from multiple facilities producing that product;
- ▶ **Weighted: describing data or information modified by applying a factor related to its significance.**

An organization discharging treated wastewater to a lake selects the following indicators for EPE:

- ▶ **total amount of specific contaminant discharged per year**
 - the local community
- ▶ **concentration of contaminant in wastewater**
 - legal and regulatory authorities
- ▶ **amount of contaminant discharged per product produced**
 - management and consumers
- ▶ **change in amount of contaminant discharged per year relative to investments in cleaner technology or process upgrade**
 - management and investors

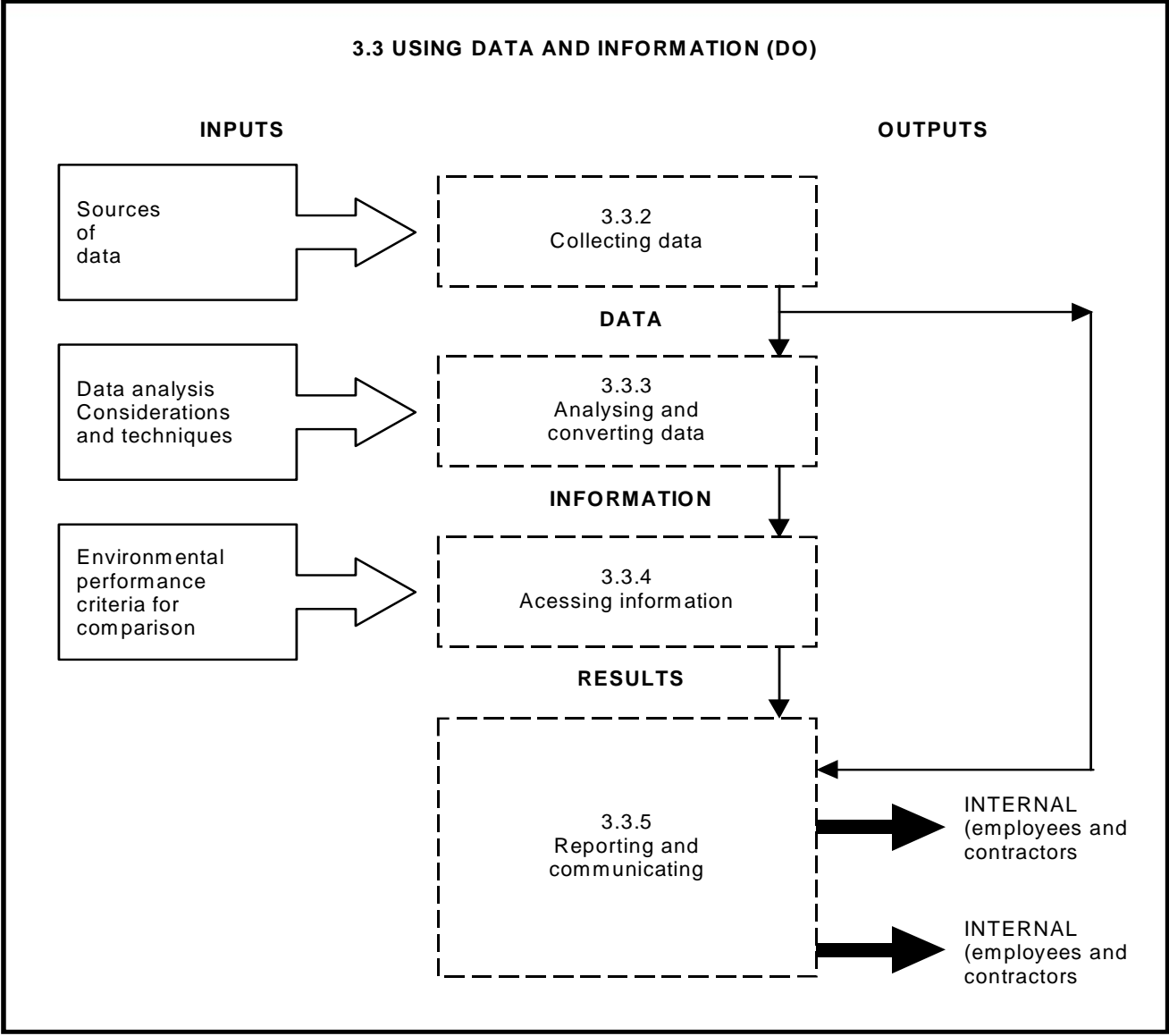
- ▶ The figure below illustrates the organization's operations, its inputs and outputs



- ▶ **Geographical region with diminishing water supply**
- ▶ **An organization may select indicators for EPE related to water conservation measures which it would not have chosen without that information.**
- ▶ **ECIs:**
 - groundwater level;
 - rate of replenishment.
- ▶ **OPIs:**
 - quantity of water used per day;
 - quantity of water used per unit of production.
- ▶ **MPI:**
 - amount of money spent on research into methods for reduction of water consumption.

3.3 Using data and information (Do)

3.3.1 General overview



Examples- information an organization can include in external communication

- ▶ a statement of the organization's commitment to EPE as part of environmental management;
- ▶ a description of this activities, products and services;
- ▶ a statement of its significant environmental aspects and related indicators for EPE;
- ▶ information on performance relative to its environmental performance criteria;
- ▶ actions arising from EPE;
- ▶ the contribution of environmental management and EPE to the overall success of the organization.

- ▶ **ISO 14031 IS LESS POPULAR THAN WHAT IT COULD BE.**
- ▶ **A SEARCH ON AN WEB SEARCH ENGINE ILLUSTRATES THIS:**

TERM	RESULTS
• “ISO 14031”	27,100
• “ENVIRONMENTAL PERFORMANCE EVALUATION	31,400
• “GLOBAL REPORTING INITIATIVE”	338,000
• “ISO 14001”	2,940,000

SOURCE: GOOGLE, 07/09/2005

- ▶ **AN INFORMAL SURVEY AMONG BVQI CERTIFICATION CLIENTS INDICATES THAT:**
 - **ISO 14031 IS NOT BEING USED TOGETHER WITH ENVIRONMENTAL MANAGEMENT SYSTEMS BASED ON ISO 14001**
 - **ISO 14031 CAN BE USEFUL AS A DIDACTIC TOOL WHILE IMPLEMENTING AN EMS, SPECIALLY ON COMPLEX ORGANIZATIONS/INSTALLATIONS (EG AN OIL REFINERY)**
 - **ISO 14031 ROBUST CONCEPTS ARE USE THROUGHOUT THE EMS IN SOME ORGANIZATIONS**

THE REALITY – IS ISO 14031 BEING USED FOR ENVIRONMENTAL REPORTING

- ▶ **NO**
- ▶ **ORGANIZATIONS DOING ENVIRONMENTAL REPORTING PREFER OTHER REFERENCES FOR EPE, OR EPIs, LIKE THE GLOBAL REPORTING INITIATIVE**
- ▶ **EXAMPLES FROM OUR CLIENTS OF ASSURANCE OF SUSTAINABILITY/ENVIRONMENTAL REPORTS**

• GLOBAL	SONY	GRI
• GLOBAL	BAT	GRI (AA1000)
• ITALY	COOP ADRIATICA	GRI (AA1000/VERISEAAR®)
• GLOBAL	ST MICRO	GRI
• BRAZIL	ARACRUZ	GRI

- ▶ **SUGGESTED ISSUES FOR IMPROVEMENT:**
 - SIMPLICITY
 - MORE FOCUS ON PRODUCTS AND SERVICES
 - MORE DETAILS ON REPORTING AND COMMUNICATION
- ▶ **CAN ISO 14031, AT LEAST ITS MAIN CONCEPTS, BE INCORPORATED TO ISO 14001 IN THE FUTURE?**



MANY THANKS

Marcio Viegas

Global Product Manager

London/Madrid

marcio.viegas@uk.bureauveritas.com

+44.773.666.2451/+34.677.995.722

